



YLI ELECTRONIC

Remote Control for Access Control

Model: WBK-400-1-12



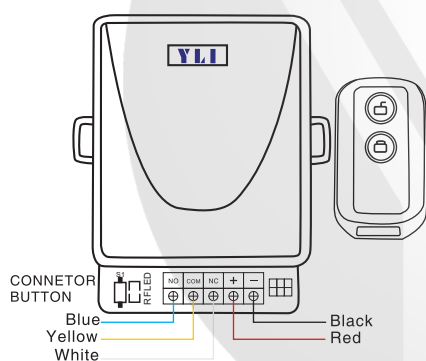
Features

WBK-400-1-12 is a wireless intelligent remote control with one relay and is mainly used in various of electric doors, windows, lifting equipment, gateways, elevators, industrial control and security industries and other fields

Specification

- Size: 58Lx62Wx30H(mm)
- Voltage: DC12V/24V (Selectable)
- Contact Rating: $\leq 20A @ 14VDC, 5A @ 250VAC$
- Current: $\leq 10mA @ 12V$
- Frequency: 433MHz, 315MHz(Optional)
- Capacity: 30 (learning code)
- Operating Temperature: $-10^{\circ}C \sim +60^{\circ}C$
- Operating Sensitivity: $\leq -105dBm$
- Transmitting Distance: $\geq 110m$
- Weight: 0.09kg

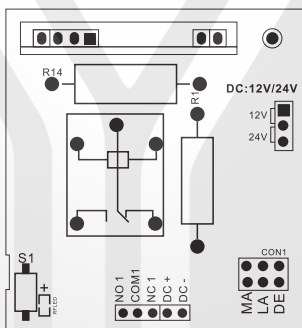
Diagram



Output Mode:

- 1.The jumper on the MA position--Use first key Only
- 2.The jumper on the LA position-- First key to open, second key to lock
- 3.The jumper on the DE position--Use first key only (3sec timer)
- 4.Auto-lock : No Jumper is requested

Diagram of PCB:



Wiring Instructions:

No1: Normally Open
Nc1: Normally Close
COM1: common
DC+: +
DC-: -

Power input selection:

12V: Jumper cap plug-in board at position of 12V .
24V: Jumper cap plug-in board at position of 24V .

Learning and clear code steps

Learning:

Press learning button on receiver, led on, then release learning button and LED off .
Press remote control button ,LED flash quickly for 5 times and then off, pair successfully.
Up to 30pcs of remotes that are able to connect to one receiver Up to 30pcs of remotes that are able to connect to one receiver.

Clearing code:

In case of remote control lost, to make all the remote controls fail ,press the learning code over 8s , then LED will be off, all data will be cleared. To restart the Remote control , please repeat the learning steps.