



YLI ELECTRONIC

Durable Electric Bolt Lock for Vending Machines

Model: YB-500B(LED)-VEM-RFID

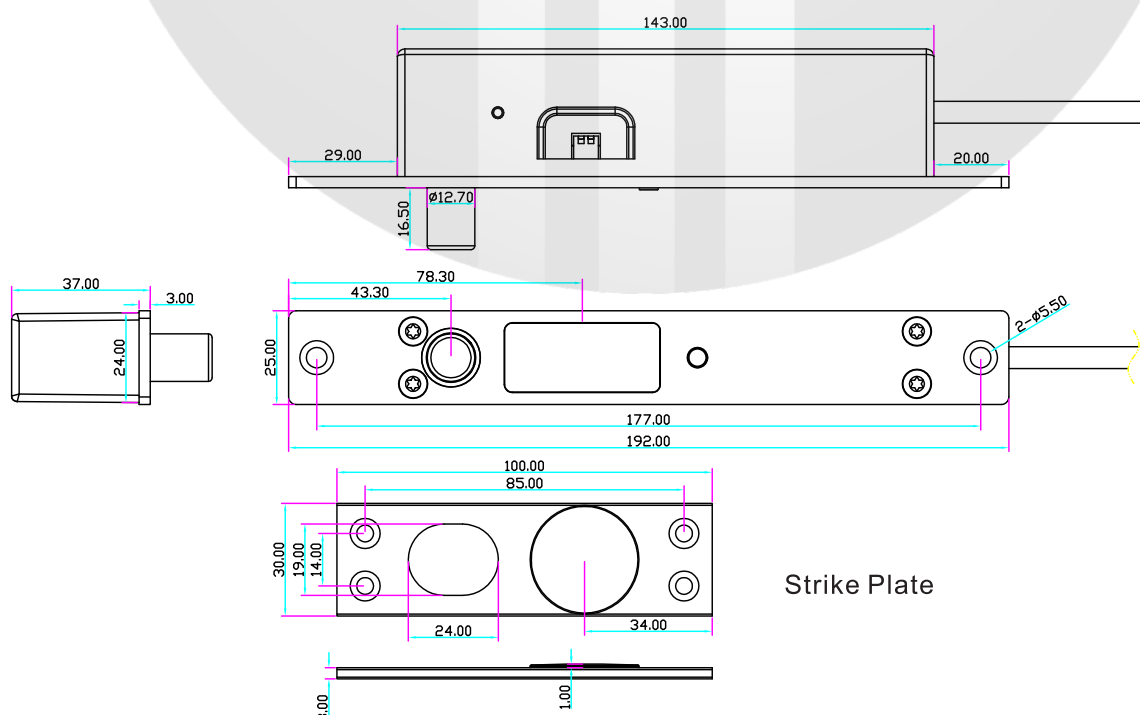
Product Features

This product is an electric bolt lock using RFID technology to secure the lock by recognizing RFID card information. The strike plate uses an RFID card instead of a magnetic piece, and its unique recognition feature addresses the issue of traditional electric locks being easily bypassed, thus improving security.

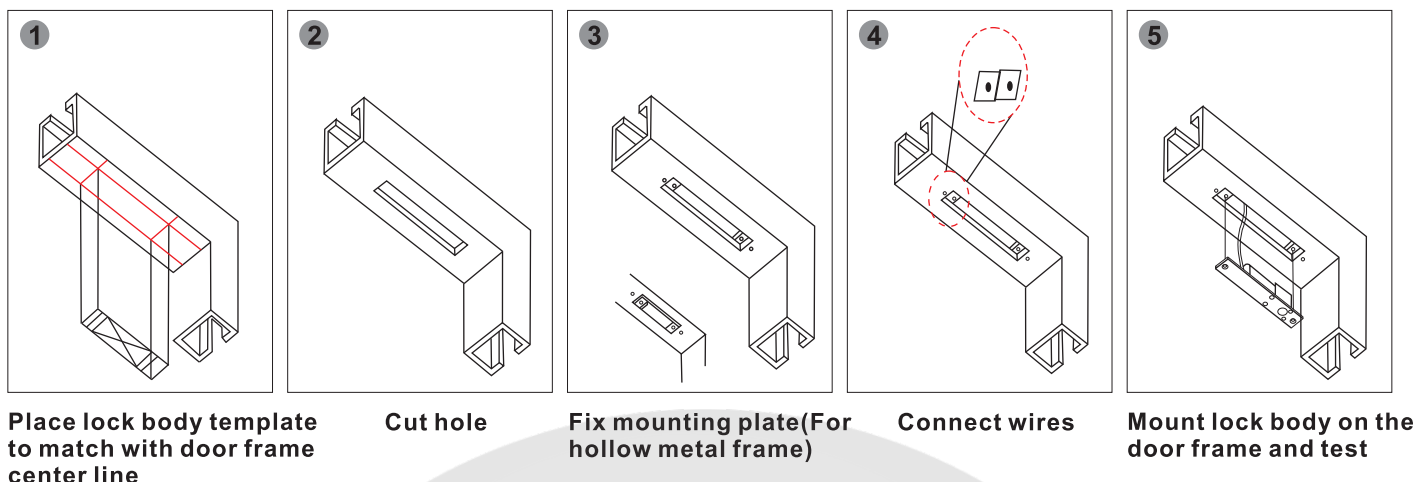
Specifications

Dimensions	192Lx25Wx37H(mm)
Strike Plate	100Lx30Wx3H(mm)
Cylinder	16(projecture)x13(diameter)(mm)
Voltage	12VDC
Current	Start Current 1A, Standby Current 0.22A
Feature	Fail Secure
Signal Output	Door (NO/COM); Lock(NC/COM)(Need order NO/COM)
LED	Red shows locked ; Green shows unlocked
Magnetic Induction Distance	8mm
Application	Vending Machines
Operating Temp	-20℃ ~+55℃
Weight	0.68kg

Dimensional Drawing

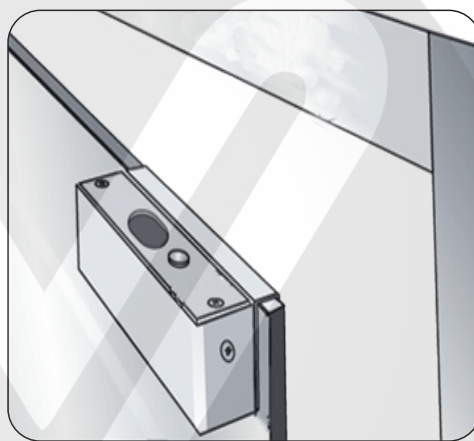
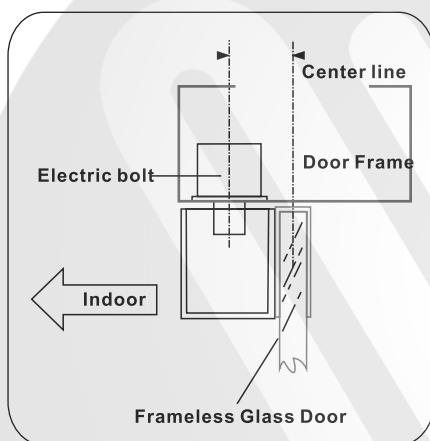


Installation



Installation Schematic

Suitable for 10-15mm glass door, BBK-600/601/602 for Frameless Glass Door.



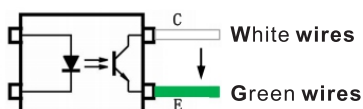
Installation Instructions

Instructions:

1. When installing the RFID card strike plate, ensure that the bottom does not touch metal, maintaining a 5mm gap, as proximity to metal can affect the sensing signal.
2. The serial number on the lock body and the serial number on the strike plate are pre-matched at the factory, with a one-to-one correspondence between the card and the lock, and a one-to-one correspondence between the lock and the strike plate. The electric lock can only recognize strike plates with the same serial number. During installation, care must be taken to prevent mixing up the strike plates.
3. Short-circuit the orange and black wires to retract the bolt and unlock; disconnect the orange and black wires to extend the bolt and lock.



<input checked="" type="checkbox"/>	Red	+	12V DC	
<input checked="" type="checkbox"/>	Black	-		
<input checked="" type="checkbox"/>	Orange	OPEN		Exit button(NO) (Orange wire connected to the negative to unlock)
<input checked="" type="checkbox"/>	Green	NO		
<input checked="" type="checkbox"/>	White	COM		Door signal
<input checked="" type="checkbox"/>	Blue	NC		
<input checked="" type="checkbox"/>	Yellow	COM		



The door signal output is connected to the C and E terminals of the optocoupler. In the powered-off closed-door state of the electric lock, the white and green wires are connected. In the open-door state, the white and green wires are disconnected.