



YLI ELECTRONIC

# American Standard Surface Mount Waterproof Electric Strike

Model: YS-138SUR-IP

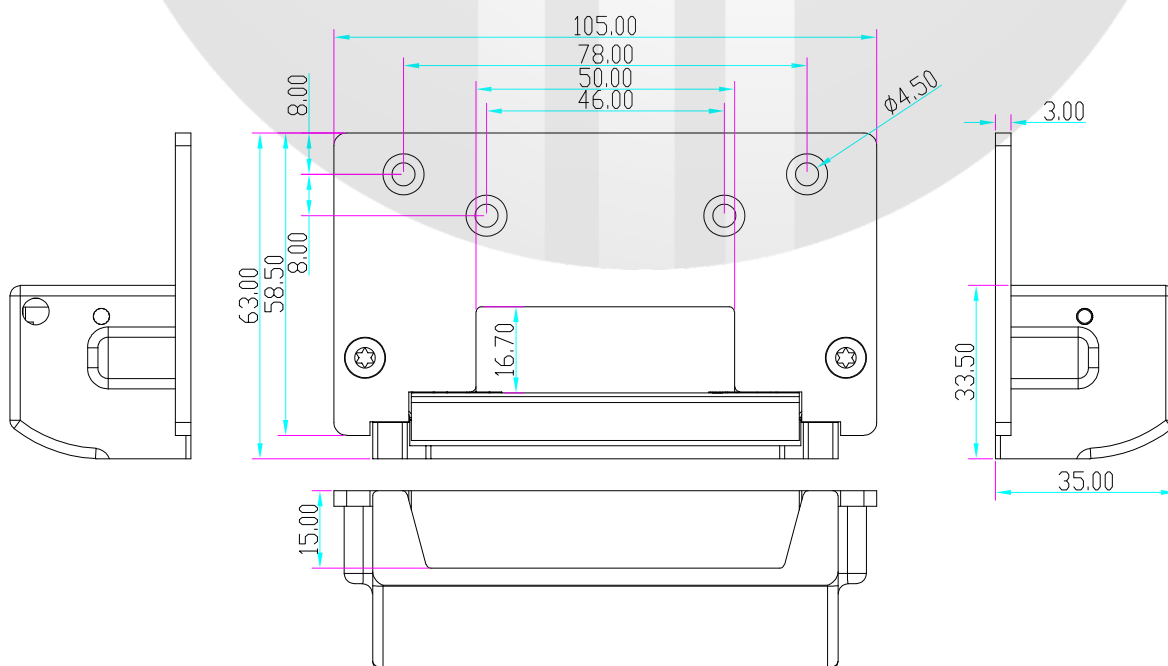
## Function

- Surface mounted electric strike, no need to slot on door frame, easy to install
- Static strength rating of 1000 pounds-force (4448 N)
- Dynamic strength rating of 50 footpounds-force (68 J)
- Solenoid valve has been tested 250,000 times (UL laboratory)
- More than 500,000 times aging test
- NC/NO adjustable
- Factory default: NC mode(Fail safe)
- SUS304 stainless steel faceplate, precision cast SUS304 high-strength strike keeper

## Technical parameters

Dimensions	L105xW63xH35(mm)
Keeper depth	12mm
Keeper width	50mm
Voltage	DC12V(DC 24V customizable)
Current	12V/280mA( $\pm 10\%$ ); 24V/140mA( $\pm 10\%$ )
Waterproof Level	IP65
Installation method	Surface mounted (use with mechanical locks)
Application	Wooden doors, metal doors, fire doors
Surface temperature	Below ambient temperature+20°C
Applicable temperature	-20°C~+55°C(-4-131°F)
Applicable humidity	0~95%relative humidity
Material of housing	Zinc alloy (high temperature painted)
Material of faceplate	SUS304 stainless steel (surface brushed)

## Diagram (unit:mm)



## Wiring Diagram

Red: +  
Black: -

DC 12V(Default)

### Conversion of NO and NC

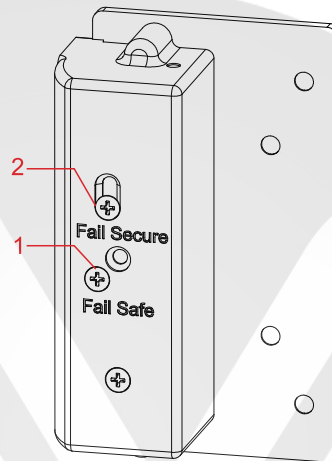
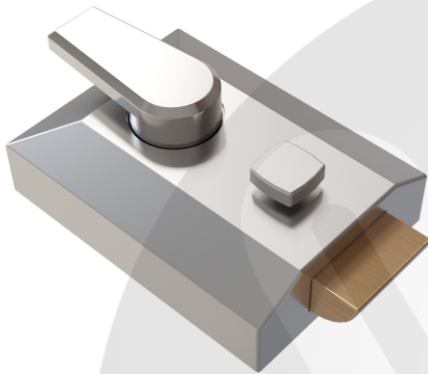
You can set the operation mode of Fail Safe or Fail Secure.

Fail safe (NC mode): When power off, the door is in unlocked state

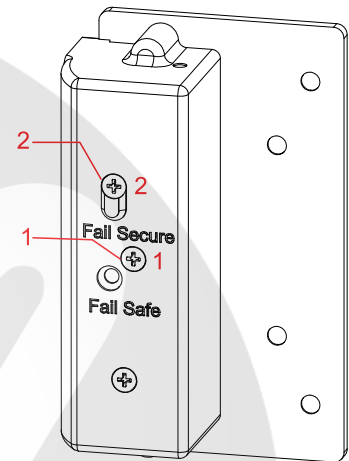
Fail secure (NO mode): When power off, the door is in locked state

Remove screw 1 and loosen screw 2, slide screw 2 to the other end of the oblong hole, replace screw 1 to "Fail secure" position, conversion completed.

### Optional mechanical lock



Fail Safe (NC)



Fail Secure (NO)



#### Tips:

Please loosen and slide screw 2 carefully, do not take it out, otherwise it will cause the internal solenoid valve to fall off.

## Installation Diagram

