



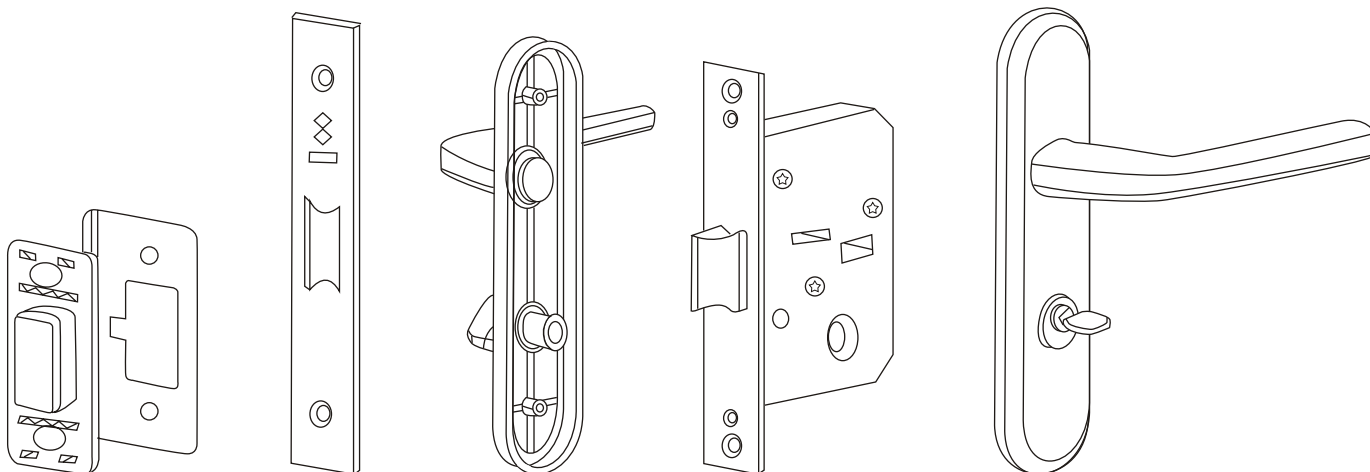
Deadlatch with Cylinder & Thumbturn

Model:YS-307

Description

It has the following features:excellent design/special exterior/elegant attractive/complete functions/com-plicated tailoring/safe and reliable.mechanical lock acts as channel lock usually,rotate the handle inside and outside.come in and go out convenient.When the door was locked with key from outside,the handle can not rotate inside and outside,it has the function of security lock;also rotate the handle to open the doorinside and outside when unlock with key or rotate the knob from inside.Rotate the knob to lock from inside,the handle can not be rotated inside and outside,safety and security.So there are only two kinds of methods to release the safety and security.So there are only two kinds of methods to release the safety to open the door,one is to unlock with key from outside,another is to rotate the knob from inside.The proper thickness of door is 35-45mm.

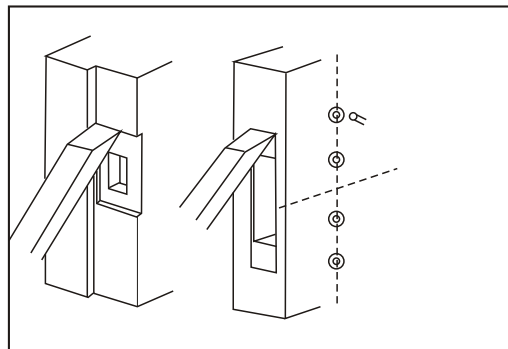
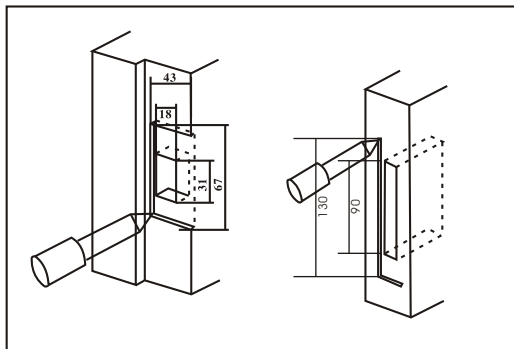
Diagram



Installation

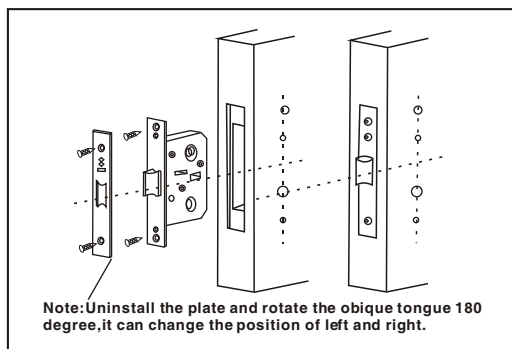
1.Draw the hole and mortise groove with pencil in the proper position of the door and doorframe.

2.Accrding to the painting,use the proper tools to drawthe relative hole andmortise groove onthe door and door frame.

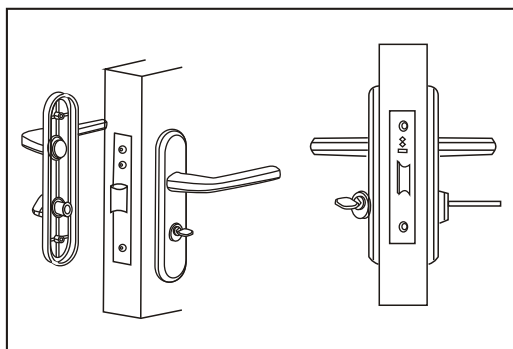




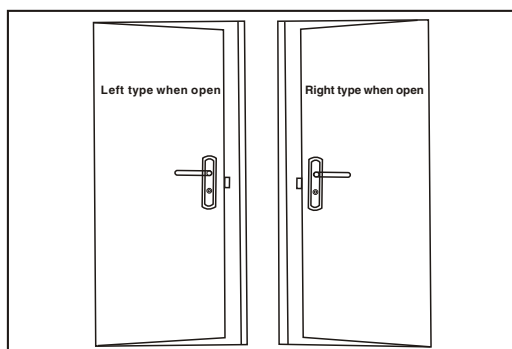
3. Install the lockbody and panel with two wooden screws on the door, then fasten the lock body and panel with two screws.



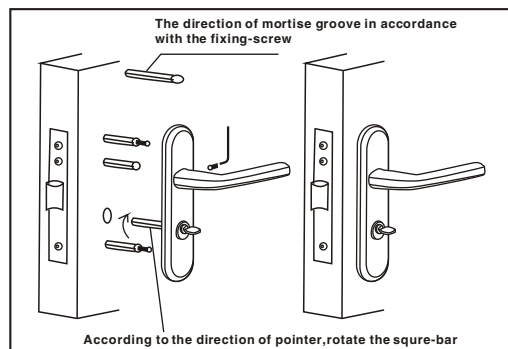
5. Install the knob of decorative panel with button, and check whether it is safely or not, and the handle should be made the oblique tongue flexible, and fasten two screws of decorative panel, then fasten the handle with fixing-screws.



7. After all of those, check the doorlock, it must be flexible; handle need running smoothly when we rotate; it's useful with key when open; rotate-button is flexible, if everything is ok, please fix all of the screws tightly.

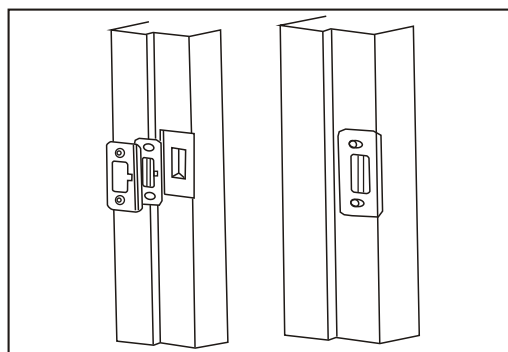


4. Use the six-side prism and the duplex-stud to link the decorative panel, then put the square bar into the lock body, install the decorative panel and handles, then fasten the out-handle with fixing-screws. Check it with key whether it is normal to lock and unlock, whether the handle makes the lock-tongue flexible.



Warning: A. The direction of mortise groove in accordance with the fixing-screw when install the square-bar. B. Lock body should be in a safety condition, then the oblique tongue can flex freely. C. Draw the key when install the decorative panel, according to the direction of lock tongue, rotate the small square-bar oppositely direction of to the end. Then you can put the small square-bar into the small square-hole of lock body. Or you can not draw the key and close the door.

6. Install the buckle-box and the buckle-plate, then fix them with wooden-screws (Note: Adjust the position of lock to make sure it is running smoothly).



⚠ Note

1. Install the lock after paint
 2. Clear up the wooden chips in the hole
 3. Don't erase with corrosion liquid
 4. Coat some oil on the lock tongue after using 3-6 months
 5. The quality guarantee period is one year, The loss as below was beyond the coverage granted by us.
- A: Haven't use the specification to install
B: The loss of using and mending with carelessness, misuse, unreasonable and unconventional.